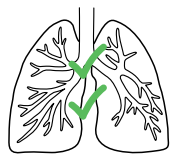


Tracheostomy



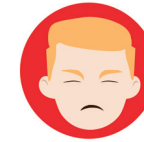
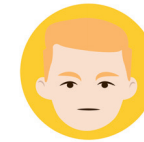
How do I know if a patient requires a tracheostomy?



After prolonged mechanical ventilation, some patients will require a tracheostomy.

The length of time mechanical ventilation is needed is often dependent on the severity of the disease.

And, once a patient has been on ventilation for two weeks, a tracheostomy is commonly considered.



- Multiple failed weaning attempts
- Secretion clearance
- Neuromuscular impairment

