

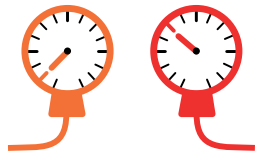
Neuromuscular weakness



How do I know if my patient's neuromuscular weakness has improved enough to extubate?

NIF/MIP

OK to extubate

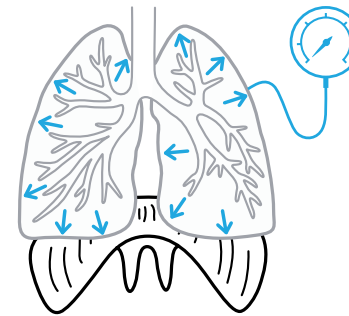


Check daily

NIF
Negative inspiratory force

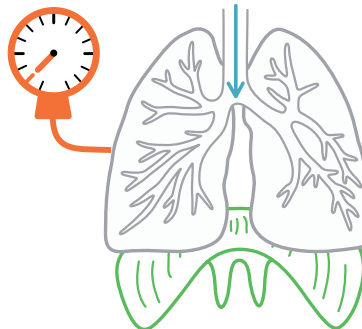
OR

MIP
Maximum inspiratory pressure

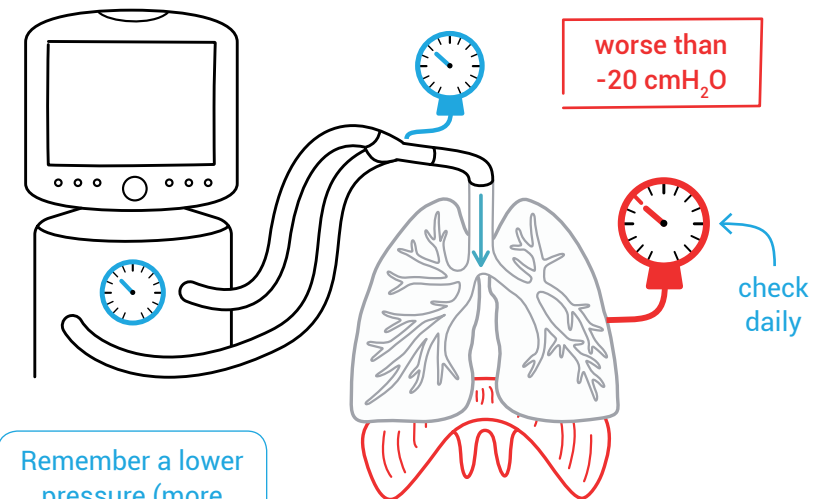


The amount of force that is generated by the patient in an inspiration.

better than
-20 cmH₂O



worse than
-20 cmH₂O



Remember a lower pressure (more negative) is better!

check daily