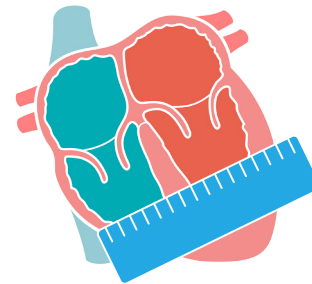


# ECHOCARDIOGRAPHY

## Understanding chamber size

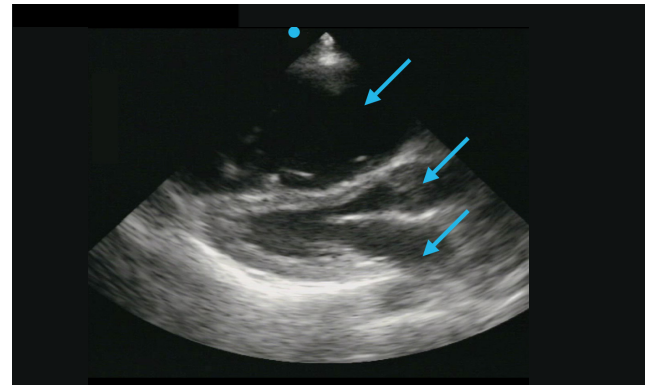
### Chamber size

The right ventricle should be about 2/3 the size of the left ventricle.



Chamber size

In the parasternal long-axis view, the right ventricle, the aortic outflow track, and the left atria, should all be about equal size.



Acute right ventricular strain, as seen in the setting of acute massive pulmonary embolism, is best appreciated in the parasternal short-axis view. In this view you see a bowing of the septum into the left ventricle, causing the left ventricle to acquire the shape of the letter "D". This is also known as the "D Sign".

