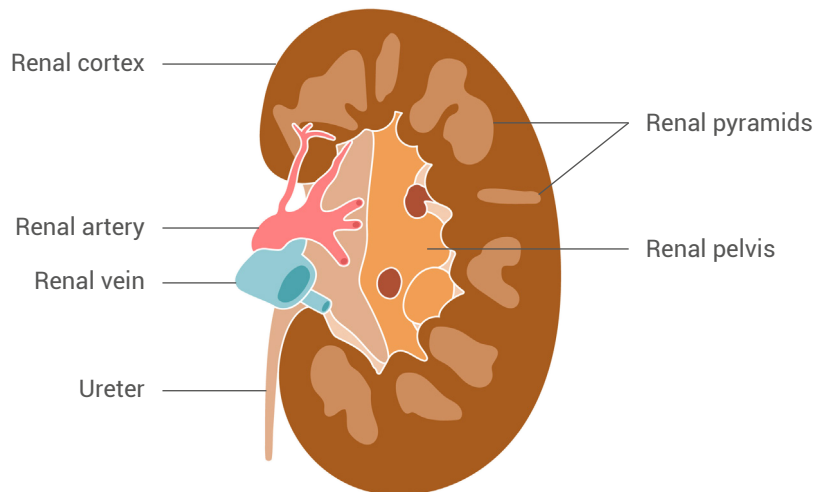


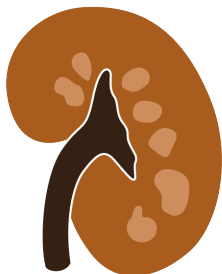
RENAL AND BLADDER

Evaluating for hydronephrosis

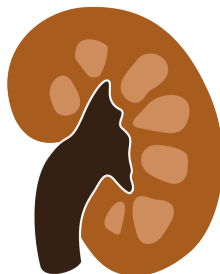


Hydronephrosis is always seen in the renal pelvis first due to a back up from the ureter.

There are multiple grades of hydronephrosis: mild, moderate, and severe.



Mild



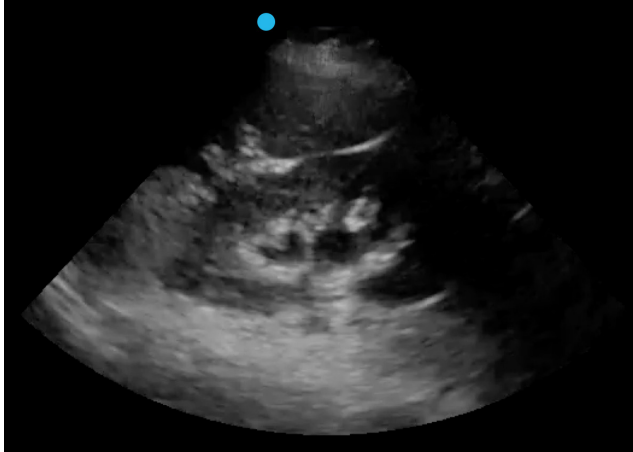
Moderate



Severe

Mild

The dilation is contained to the renal pelvis only.



Moderate

The dilation has spread from the renal pelvis into the calyces.



Severe

The dilation has spread to the cortex, and you will often lose the shape of the kidney.

