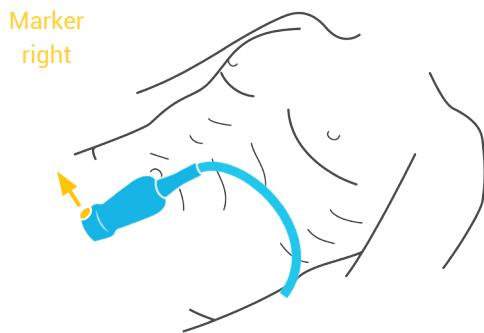


RENAL AND BLADDER

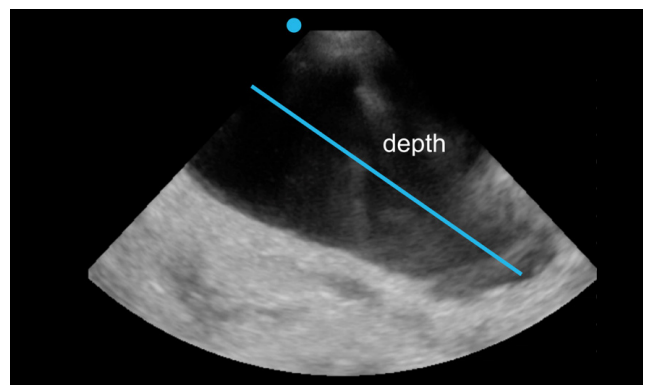
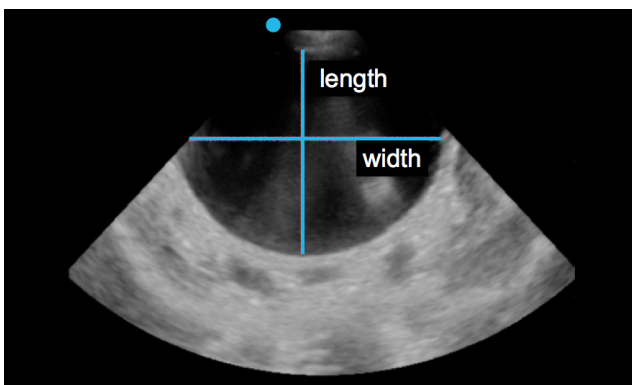
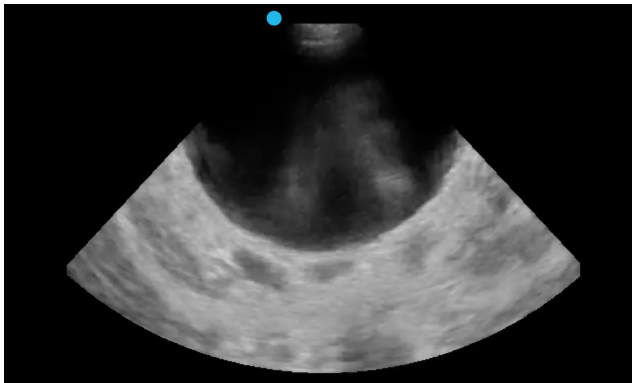
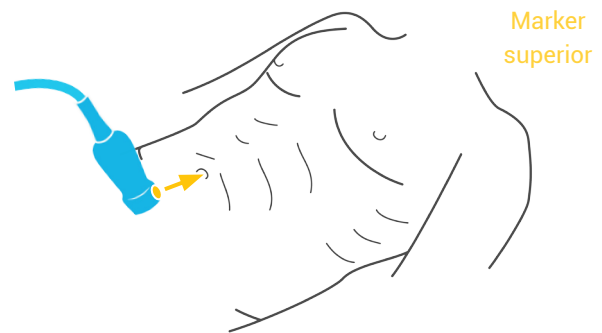
How to measure bladder volume

Using a linear probe, start by obtaining long- and short-axis views of the bladder.

Bladder, short-axis view



Bladder, long-axis view



Measure the length and width in the short-axis view. Measure the depth in the long-axis view. Multiply the length x width x depth x 0.7 to find the bladder volume.