

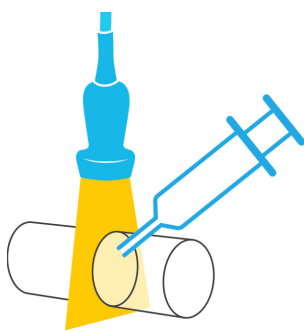
ULTRASOUND GUIDED PROCEDURES

Understanding the principles

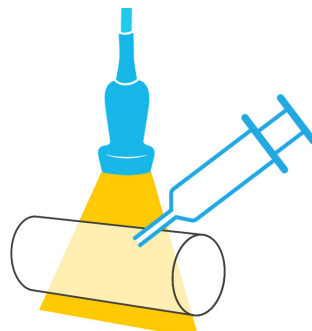
Ultrasound guidance for needle-related procedures was among the earliest uses for point of care ultrasound.

Use the linear probe (because you are usually viewing superficial structures) in long- or short-axis to find the target and visualize the tip of the needle. You can use the static approach or the dynamic

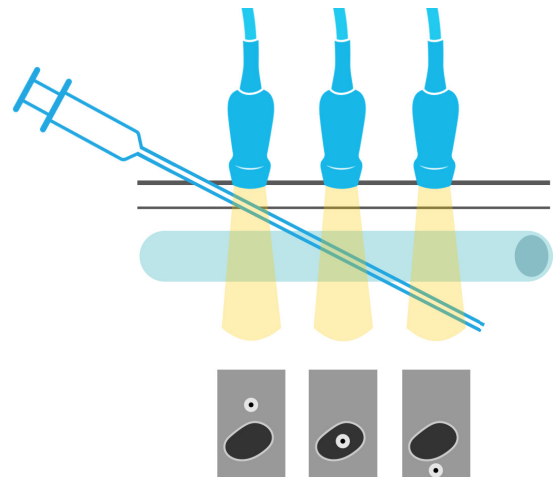
approach. In the static approach you visualize the area and assess for the best location, mark the skin and then put the probe down before performing the procedure; in the dynamic approach you visualize the area and perform the procedure simultaneously, under ultrasound guidance.



Short axis/out-of-plane



Long axis/in-plane



Make sure you are always aware of where the needle tip is while advancing your needle.