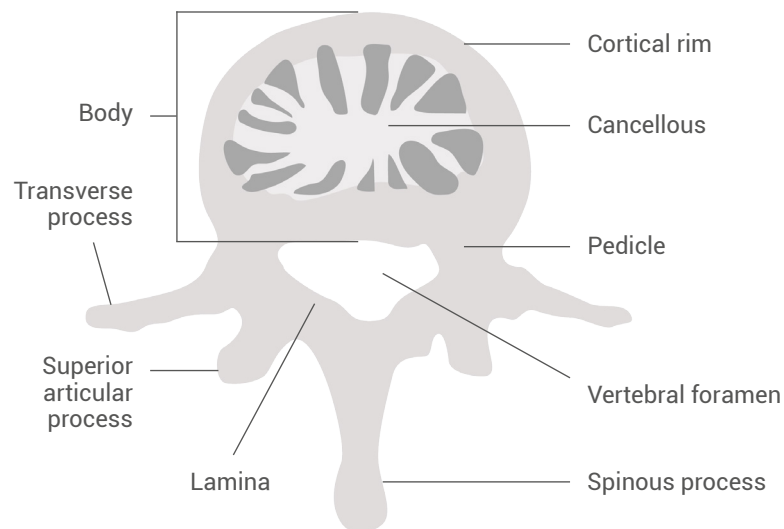
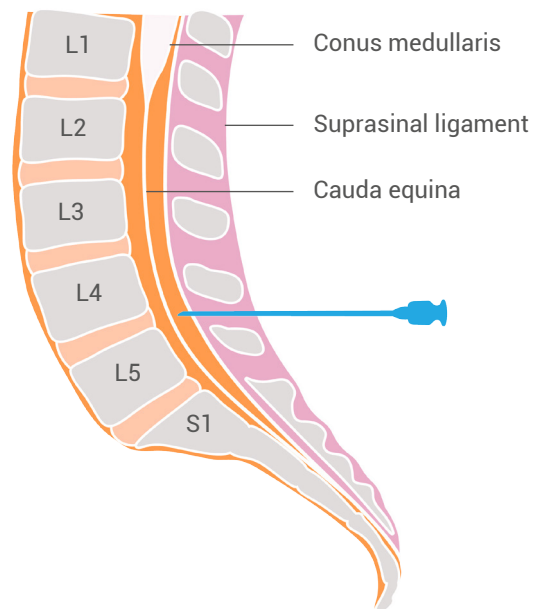


ULTRASOUND GUIDED PROCEDURES

Lumbar Puncture

Ultrasound guidance for lumbar puncture is helpful in patients where this procedure may be difficult due to the patient's habitus or a known variation of anatomy (e.g., scoliosis).

Traditionally the lumbar puncture is attempted at level of L4–L5.



Using a linear probe oriented for a short-axis view, evaluate for midline by looking for a spinous process at the level of L4. Mark the skin above and below the probe, and connect the marks to draw a vertical line

Then, with the linear probe held over vertical line you have just drawn, and oriented for a long-axis view, evaluate for the interspinous space between the L4 and L5 spinous processes. Mark the probe on either side, and connect the marks to draw a horizontal line.

Where the lines intersect is the point of entry for the lumbar puncture.

