

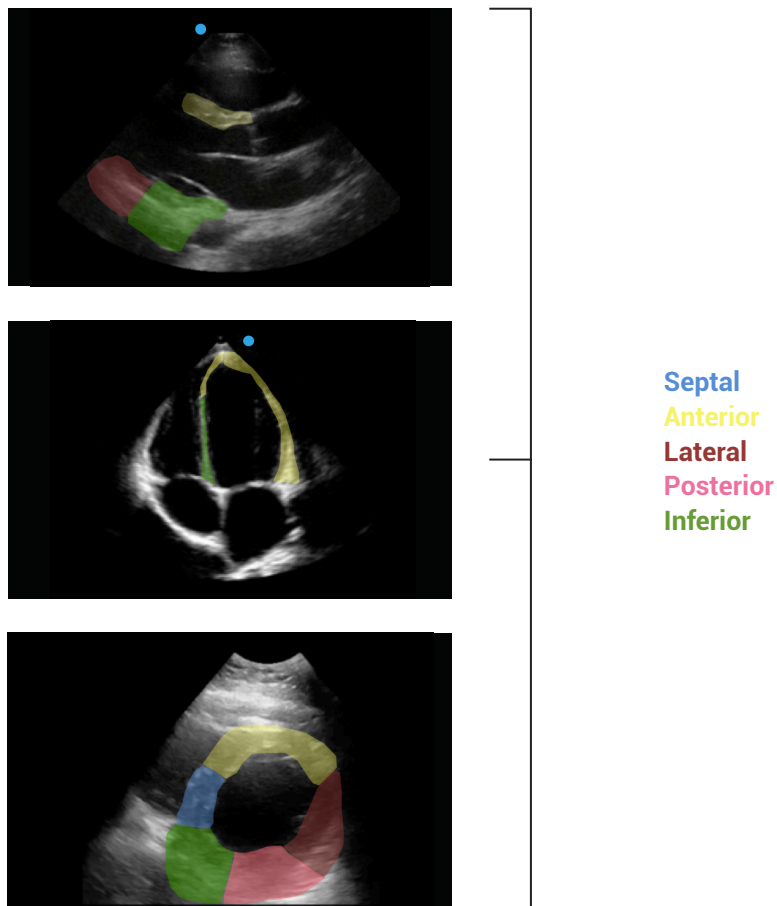
Point-of-care echocardiography

RECOGNIZING REGIONAL WALL MOTION ABNORMALITIES

Wall motion abnormalities (WMA) are an early finding in cardiac ischemia. WMA appear as a focal area of hypokinetic wall movement. Detecting a WMA in a patient with suspected ischemia may help lead to more aggressive diagnosis and treatment.

Without prior echo data, it is not possible to distinguish between a new or old WMA.

Point-of-care echo divides the heart into large territories for potential WMA. Comprehensive echo further subdivides these into smaller segments.



To recognize a WMA, it can be helpful to imagine a dot at the centre of the ventricle and ask if each segment of the myocardium is moving equally toward the dot.

