

## Gastrointestinal applications

# DIAGNOSING INTUSSUSCEPTION

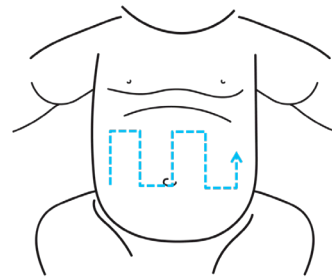
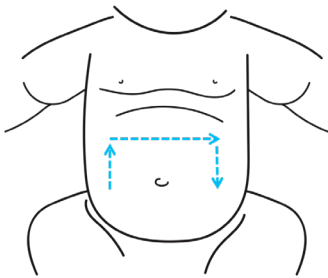
Intussusception is an important consideration in the differential diagnosis of an infant with vomiting, abdominal pain, or lethargy. Ultrasound is the most common imaging test used to make the diagnosis of ileocolic intussusception. Sensitivity and specificity are near 100% for experienced operators.

Point-of-care ultrasound can allow rapid diagnosis while a patient is symptomatic, and facilitate consultation, transfer, and definitive care.

### Technique

Use the high frequency linear transducer. Trace the path of the colon. Use graded compression to displace bowel gas.

An alternative is to use a mow the lawn approach by moving the transducer through all four abdominal quadrants.

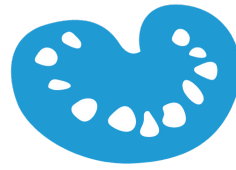


### Ultrasound findings of intussusception

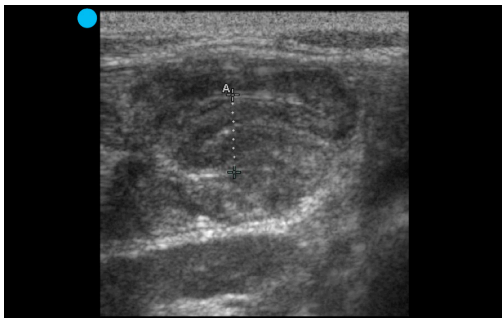
There are three patterns seen on ultrasound that are consistent with intussusception: target sign, pseudokidney sign, and pancake sign. These correspond to visualizing the intussusception in a short-, oblique-, and long-axis, respectively.



Target sign



Pseudokidney sign



Pancake sign