

## Musculoskeletal imaging

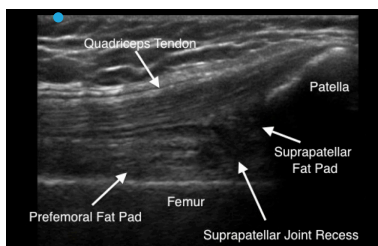
# VISUALIZING SOFT TISSUE STRUCTURES IN THE LOWER LIMB

As in the upper extremity, understanding the appearance and standard views of lower extremity structures on ultrasound is the basis for identifying normal and pathologic findings. Compare findings to the unaffected side.

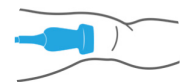
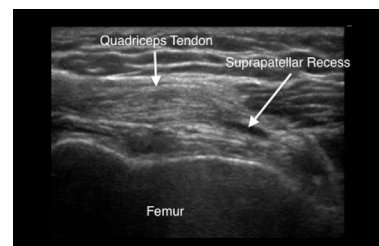
### Knee

Position the patient seated or supine, with the knee in partial flexion.

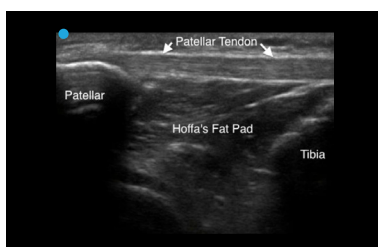
#### Suprapatellar longitudinal



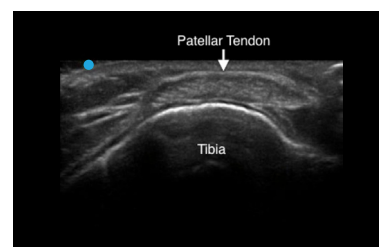
#### Suprapatellar transverse



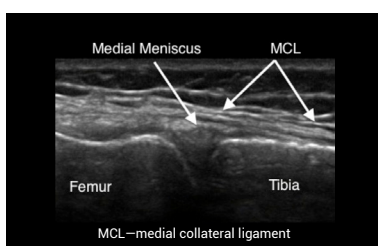
#### Infrapatellar longitudinal



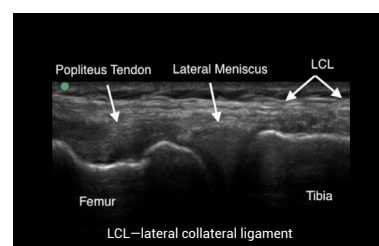
#### Infrapatellar transverse



#### Medial



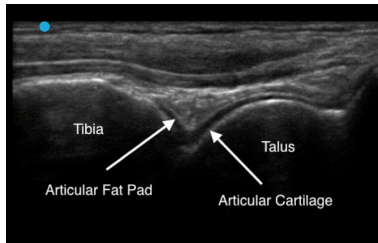
#### Lateral



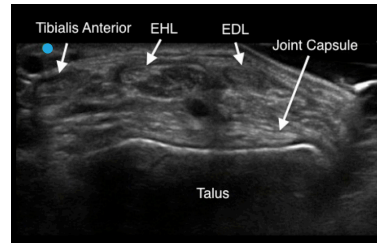
## Ankle and foot

Position the patient with the knee flexed and the foot on a table or footstool. For posterior views, place the patient prone or hang the ankle off the edge of the bed or table.

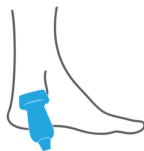
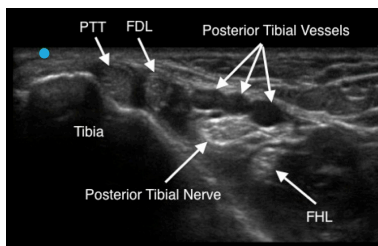
### Anterior longitudinal



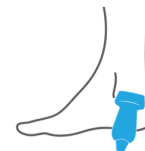
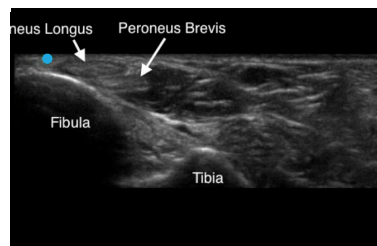
### Anterior transverse



### Medial transverse



### Lateral transverse



### Posterior longitudinal



### Plantar surface

