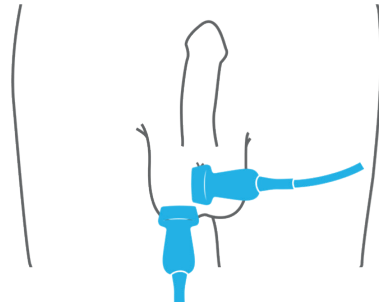


## Scrotal ultrasound

# ACQUIRING SCROTAL IMAGES

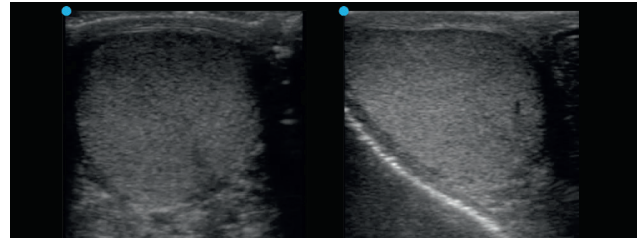
### Technique

Use a high frequency linear transducer. Place the patient supine, with scrotal support and the penis directed to the head. Obtain images of both testicles in short- and long-axis. A spectacle or buddy view of both testes in short-axis in the same image allows simultaneous comparison. Fan through the entirety of both testicles.

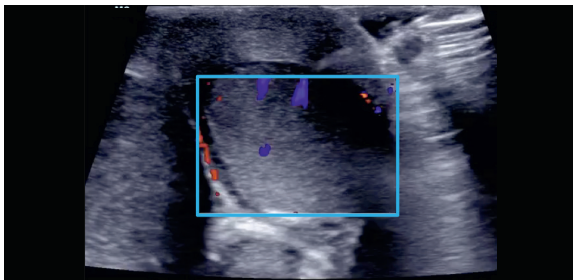


### Anatomy

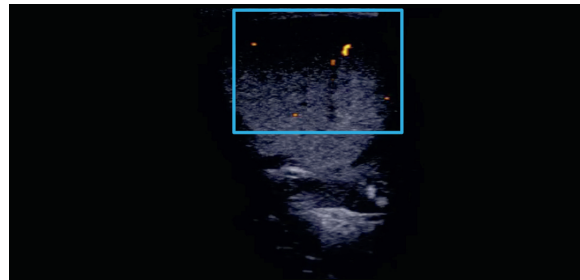
Normal testicles have a uniform echotexture with no disruption to the testicular architecture. The testicles are bounded by a hyperechoic capsule. No fluid is typically seen in the scrotum.



Color Doppler allows an assessment of flow to the testicle. Power Doppler is more sensitive to detect flow.



Color Doppler



Power Doppler