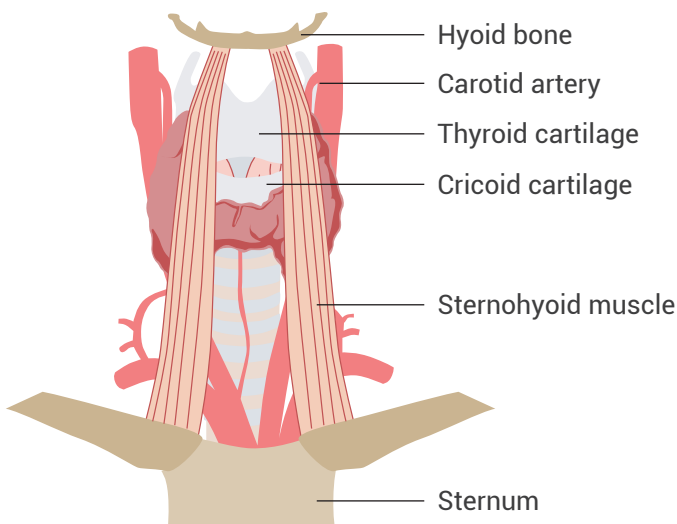


THYROID PHYSIOLOGY

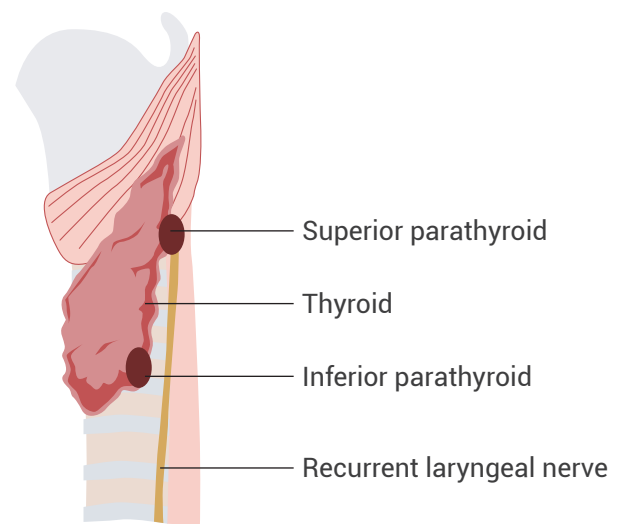
Appreciating thyroid anatomy

The thyroid is located in the neck, anterior to the trachea, and just below the cricoid cartilage. It is a butterfly-shaped gland, with one lobe on either side of the trachea, joined by a thin band of tissue called the isthmus. Each lobe is bordered laterally by the carotid artery and medially by the trachea. Posterior to the thyroid are the parathyroid glands and the recurrent laryngeal nerves. Microscopically, the thyroid is composed of follicles, where thyroid hormone is stored.

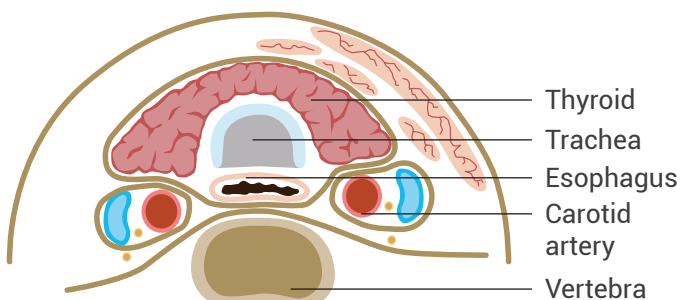
Anterior view



Sagittal view



Transverse view



Thyroid follicles

