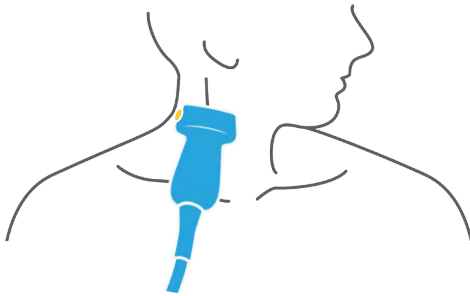


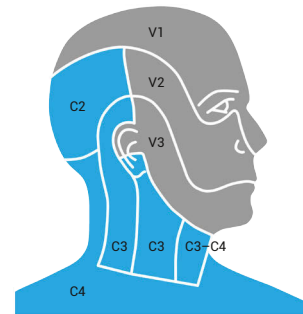
Pain in the neck

PERFORMING AN ULTRASOUND-GUIDED SUPERFICIAL CERVICAL PLEXUS BLOCK

Probe position



Distribution



The anatomy

The superficial cervical plexus (SCP) is composed of nerve roots C1–C5.

Tips for success

- Use a linear ultrasound probe.
- Landmarks:
 - Find the sternocleidomastoid (SCM) muscle.
 - Focus on the inferior margin of the SCM muscle near its tip (it is within this hyperechoic fascial plane that the SCP is found).
- Place color Doppler on this target area to ensure there are no vessels in your expected needle path.
- Do the procedure in-plane.
- Use 10 mL of anesthetic.

Indications

- Will anesthetize nerve roots C1–C5:
 - ear lacerations or foreign body removals
 - neck lacerations
 - clavicular injuries
 - central venous catheter (CVC) placement